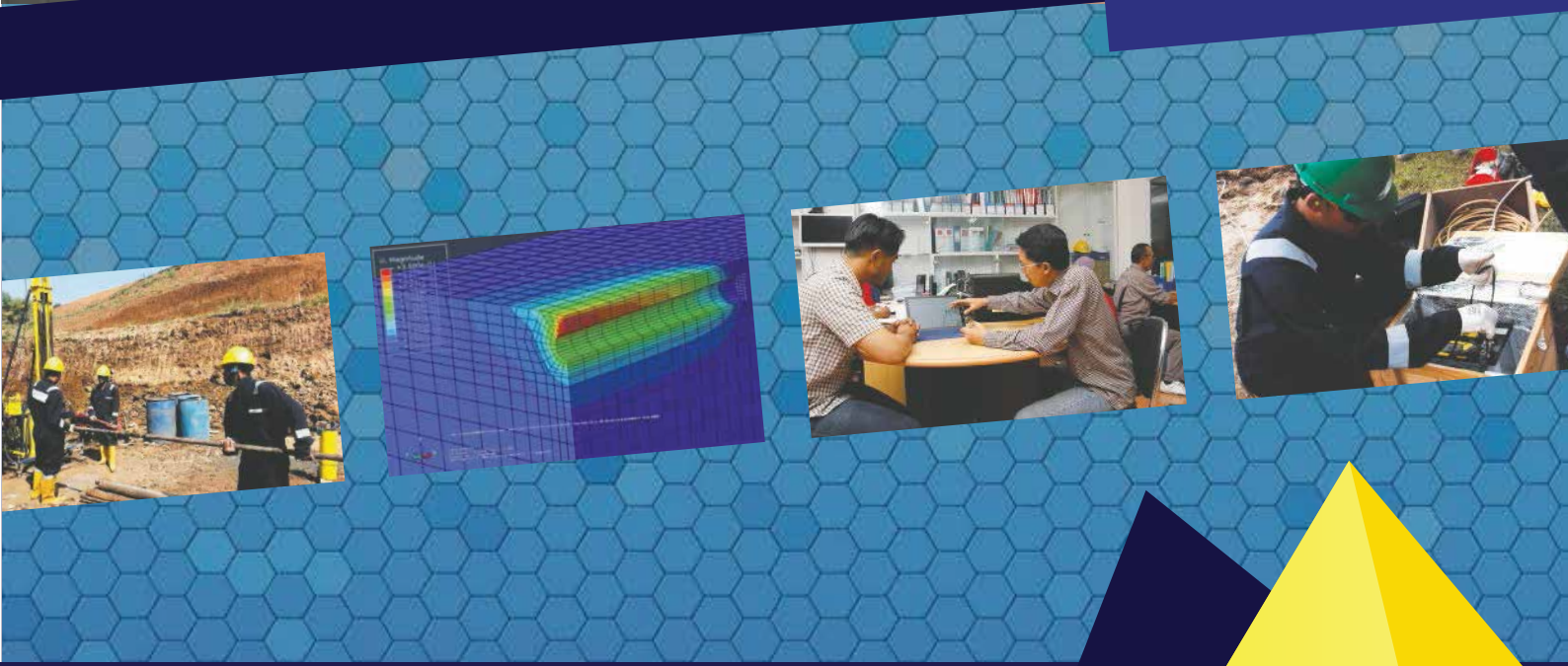




NSE

Company Profile





About Us

History

PT Nur Straits Engineering (NSE), which provides consulting engineering services, has been established since 2009. NSE's activities are directed to supporting Indonesian infrastructure development projects such as ports or other coastal structures developments. Besides, NSE has been developed as well to providing survey services.

NSE is a privately owned company belong to citizen of Indonesia, including its management staff. The legal status of the company is PERSEROAN TERBATAS (PT). In carrying out its activities, NSE is supported by experts from various disciplines. NSE always provides effective and efficient services which are able to satisfy clients and deliver the best results for any works performed. This would be possible because of the support of dedicated staff and sufficient and adequate equipments.



Vision

Being a leading, best, and innovative engineering service company in Indonesia with international quality for the welfare and progress of the nation of Indonesia.

Mission

- 1 Develop strong and innovative human resources with continuously learning and being motivated to build Indonesia.
- 2 Be a technology pioneer in the engineering services provider in Indonesia.
- 3 Have an active and maximal role in contributing ideas and their implementation in the field of engineering to the government of Indonesia, the society of Indonesia and the international community.
- 4 Create a professional work environment for encouraging the development of the company

Engineering Design

Front End Engineering

Front End Engineering Design (FEED) is critical to the long-term success or failure of the overall objectives of the plant project. While the business plan identifies the economic opportunity, the Front End Engineering Design (FEED) will establish the set of process operating conditions and specify the equipment to achieve the level of reliability, efficiency, and safety required. Since this design phase sets the direction for the rest of the project, proper process specification is very crucial to its success.

NSE has the capability to deliver Pre-FEED as well as full FEED depending on clients' requirements and needs. With the Pre-FEED work we typically provide our clients with complete basis for design especially where this is neither available nor properly done at the conceptual design stage.

Detail Engineering

Detail Engineering Design (DED) is the essential bridge between the Front End Engineering Design (FEED) and construction phase of a project in order to convert the ideas into reality. DED involves close coordination and synchronization among various disciplines of engineering. It is vital to the owner flexibility time to execute the project when conducting DED. In NSE, we have a dedicated team of reliable and knowledgeable managers, engineers and designers who are able to provide the complete detail engineering design solution. We adhere to relevant standards, specifications, procedures and relevant authorities.

Construction Engineering

Our commitment to your success includes planning, engineering design and construction. We serve as your dedicated representative during the construction phase, ensuring you avoid the many pit falls that can compromise a project in its final stage. We develop the construction method to meet the client expectation and budgeting wisely to achieve project schedule on time.

Our Detail Engineering Design Package generally contains the following:

- Process Engineering
- Mechanical Engineering
- Piping Engineering
- Pipeline Engineering
- Instrument Engineering
- Electrical Engineering
- Civil and Structural Engineering



Civil & Infrastructure Planning

Planning

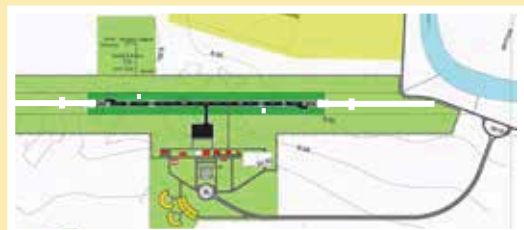
Supported by competent experts in their discipline, NSE has contributed in strategic infrastructure planning in Indonesia.

The planning process involving multi discipline experts and large area, have created our project planning become masterpiece in each areas.



NSE has planned civil infrastructure, such as:

- Airport,
- Coastal Zone Management,
- Mining and Coal Preparation Plant,
- Green Office Building Concept and An Environmental Friendly Warehouse Complex
- Railways Route
- Road & Transportation Planning



Geophysical Survey

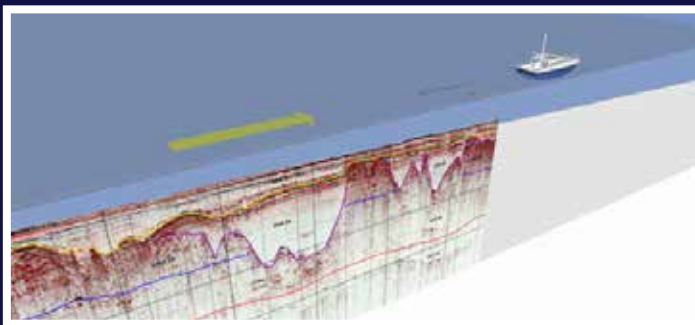
Survey, Convey, and Verify

We do **Survey** to see what is inside the earth and how is the earth's surface looks.

We **Convey** the survey result without any data left behind in the field even just one millimeter.

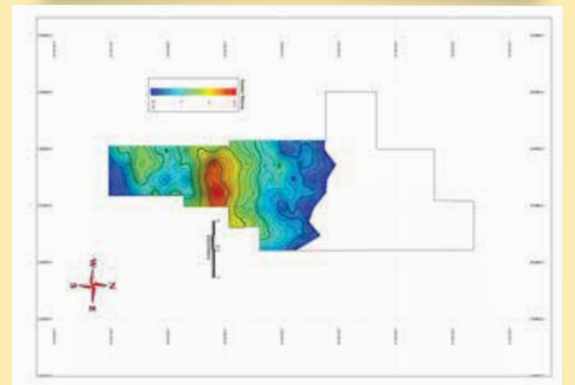
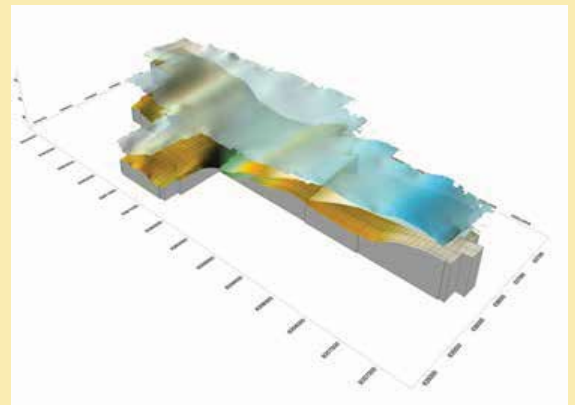
We **Verify** the survey result to convince the client that the product is reliable and accurate.

The updated and reliable survey tools are used to obtain the accurate data. We use ROV, Side Scan Sonar (SSS) and other imaging submersible tools to view, visualize and trace the pipeline and cable route. We also use the complete and modern Survey Vessel which utilized by modern & accurate positioning systems.



Complete Services

- 2D and 3D seismic survey
- 2D and 3D seismic acquisition parameter design.
- Seismic data processing
- Bathymetric Charting
- Hydrographic Survey
- Pipeline Route & Cable Route Survey
- Side Scan Sonar Survey
- ROV

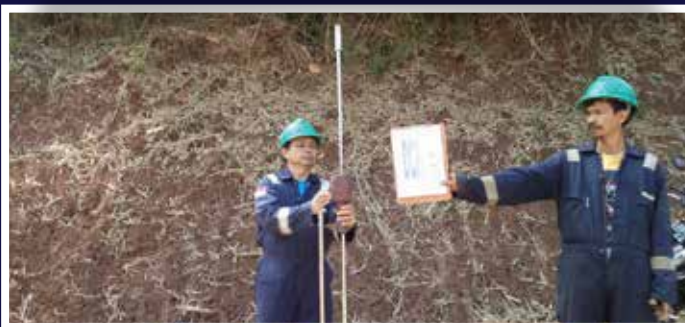




Geotechnical Survey

We drill and investigate what is under earth surface

Since nature gives the opportunity to dig the knowledge inside it, we gather all of potency to drill and investigate the soil, without disturb the environment. With the credence given to NSE by Client, we believe that every single drill pipe that inserted into soil will represent all of the scope of works that client gave to us, precisely!



Onshore & Offshore

We do both onshore and offshore. Since we are committed in several Port Design project, warehouse and gas pipeline route, we do drilling survey onshore for Land Facility, and offshore drilling for Pipeline Support, Sea infrastructure such as Jetty/Wharf and other marine structures.

Complete Services

- Drilling (Boring) & Coring of Soil Sample
- (Dutch) Cone Penetration Test/ CPT
- Dynamic Cone Penetration
- Vibrocoring
- Data Processing and Analysis of Soil and Geological Composition



Land and Aerial Survey

Land Survey

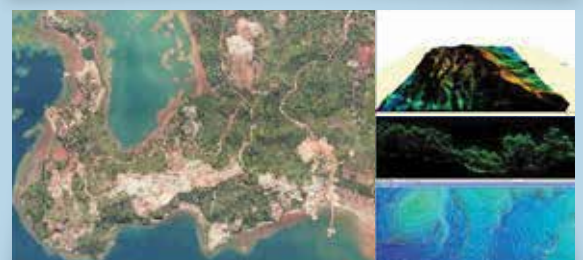
Survey teams available for work throughout Indonesia with latest Leica “state-of-the-art” equipment including DGPS, total stations (conventional laser, reflectorless and Automatic Target Recognition), electronic levels, underground services locator, hydrographic equipment for bathymetric survey, tide and current monitoring.

Our surveyors are trained, experienced professionals who are regularly audited & trained. All our equipment is regularly calibrated by independent institutions. Calibration certificates available.



Aerial Survey

Clients can now have terrain models and contoured topographic mapping for large scale projects which can be combined with high resolution satellite imagery or air photography to produce base mapping in the form of combined topographic and other thematic maps (geology, surface water, vegetation, soils, etc.) at scales that are useable for planning, feasibility, preliminary and even detailed design. These can be combined with published maps from “desk top studies” to provide project start up base maps that in the past were unavailable or took many months or years to produce.





Soil Mechanics Lab

Atterberg Limit

The test is performed to determine the plastic and liquid limits of a fine-grained soil. The Liquid limit is arbitrarily defined as the water content, in percent, at which a part of soil in a standard cup and cut by a groove of standard dimensions will flow together at the base of the groove.



Consolidation Test Unit

The test is performed to determine the magnitude and rate of volume decrease that a laterally confined soil specimen undergoes when subjected to different vertical pressures. This data is useful in determining the compression index, the recompression index and the preconsolidation pressure of the soil

Oven

NSE is using the well manufactured tools to make sure that all of procedures done are supported by high quality equipment. Calibration and warranty are also completed to all laboratory unit. Some of Equipment are imported from Best Manufacturer.



Soil Mechanics Lab

Specific Gravity

Specific gravity is the ratio of the density of a substance to the density (mass of the same unit volume) of a reference substance. Apparent specific gravity is the ratio of the weight of a volume of the substance to the weight of an equal volume of the reference substance.



Triaxial Test Unit

The test is triaxial test is a common laboratory testing method widely used for obtaining shear strength parameters for a variety of soil types under drained or undrained condition.

Unconfined Compression

The primary purpose of this test is to determine the unconfined compressive strength, which is then used to calculate the unconsolidated undrained shear strength of the clay under unconfined conditions



Warehouse

NSE Warehouse

NSE operates its own survey equipment such as:

- Drilling machine Jackro, Cap. 100, 200 and 300 meters depth
- Cone Penetration Test (CPT) Equipment Cap. 2,5 Ton
- Hydraulic Cone Penetration Test (CPT) Equipment Cap. 5 Ton
- Hydraulic Cone Penetration Test (CPT) Equipment Cap. 10 Ton
- Inclinator
- Field CBR
- DCP Equipment
- etc



Guarantee

By operating its own equipment, NSE guarantees an accurate data acquisition & cost and time-effective projects.



Workshop

Tower Rig



Drilling Machine Accesories



Casing



Core Barrel



Hammer



Housing Plug



SPT

Workshop

NSE Production

A well-maintained equipment is the key of an accurate data acquisition on site. To support the Soil and Rock Investigation projects, NSE Workshop prepares and maintains all survey equipments. Post-project & pre-project maintenance is a Standard Operation Procedure in NSE Workshop to ensure that the equipments are ready to be mobilized at any time.

NSE Workshop also conducts the production of drilling machine and its accesories being widely used by geotechnical and geological survey firms throughout Indonesia.

The products produced by NSE Workshops are:

- Portable Drilling Machine (Horizontal and vertical) : Jackro 50, 75, 100, 150, 175, 200, 300, etc
- Tower Rig
- Bore Pile Drilling Machine
- Ground Water Drilling Machine
- Drilling Machine Accesories

Portable Drilling Machine

(Horizontal and vertical) : Jackro 50, 75, 100, 150, 175, 200, 300, etc



Experience



2009

2010

Supervision for Data Cable Link & Fiber Optic of JABODETABEK Train I Jakarta
 Study Level of Service for Road I Bandung, West Java SID Subang Port I West Java
 Port Supervision I Batang, Central Java
 General Port Supervision I Rembang, Central Java
 FS Port I Lamongan East Java
 SID Dredging & Reclamation Tanjung Buluh Pandan Madura, East Java
 Dredging Design Taddan Port (Including SID) Madura, East Java
 Pasean Port Supervision I Madura, East Java
 Taddan Port Supervision I Madura, East Java
 Labuan Amuk Port Supervision I Bali
 SID Seba Port I Kab. Saba, NTT
 Maloy Port Supervision I East Kalimantan
 Kuala Semboja Port Supervision I East Kalimantan
 MP Coal Port Sebuku I South Kalimantan
 Kuala Pembuang Port Supervision I Central Kalimantan
 SID Special Port I Batam, Riau Islands
 MP General Cargo Port I Muko-muko , Bengkulu
 Port Supervision I Dumai, Riau
 Bumbulan Port Supervision I Gorontalo
 SID Poso Port I Central Sulawesi
 Lawele Special Port Supervision I Southeast Sulawesi
 Belang-belang Port Supervision I Mamuju, West Sulawesi
 Geotechnic Survey Special Port I Tarakan, East Kalimantan
 General Port Supervision I Tanjung Redeb, East Kalimantan

CPO (Special Purpose) Port Planning T Tobelo, North Halmahera (Indofood Group)
 General Port Development Supervision I Tadan, Pamekasan
 General Port Development Supervision I Pasean, Pamekasan
 Passenger Port Development Supervision I Dumai , Riau
 General Port Development Supervision I Subang, West Java
 General Port Design Planning I Teluk Lamong, East Java
 CPO - Offshore Port Planning & Detail Design Lubuk Gaung, Dumai - Riau (Smart Group)
 CPO - Port Master Plan & Detail Design I Lampung (Smart Group)
 General Port Construction Supervision I Tj. Mochoh . Tj. Pinang, Riau
 Special Purpose Port Master Plan I East Kutai , East Kalimantan
 Airport Master Plan and Detail Engineering Design I North Kayong, West Kalimantan
 General Port Master Plan & Detail Design I Lembata, NTT
 Master Plan Review & Basic Design of Cigading Port I Cilegon, Banten (Krakatau Steel Group)
 Perencanaan Teknis Jalan Tasikmalaya-Cimaragas-Banjar | Dinas Bina Marga Jabar

Experience



2011

Perancangan Offshore Proyek Lubuk Gaung- Dumai, Riau | PT. Dumai Golden Industry Complex | Lubuk Gaung-Dumai, Riau

Review Mp Dan Study Pengembangan Lahan Utara | Krakatau Bandar Samudra | Pelabuhan Cigading-Cilegon

Waworada Port Supervision | West Nusa Tenggara

Masterplan for Kubangsari Area, Cigadung Port (Extend) | Cilegon, Banten (Krakatau Steel Group)

Provision for Landing Jetty of Star Energy | Jailolo, West Halmahera

DED of Tomia Port | Southeast Sulawesi

FS Jalan Alternatif Ciawi-Kadipaten | Dinas Binamarga dan Pengairan Kab. Tasikmalaya

Planning Techniques Roads And Bridges Regional 7 (Aceh Utara) | Dinas Bina Marga & Cipta Karya Aceh

Technical Supervision Road Improvement :
Cikamurang-Jangga (4 Km),
Cikamurang-Bantarwaru/Subang Bts Indramayu (5 Km) dan
Kadipaten-Bts Majaleng ka Indramayu (4 Km) Pakaet
K-09/PW/2010 | Pemprov Jawa Barat Dinas Bina Marga

Road and Bridge Supervision Wilayah X (Aceh Timur) | Dinas Bina Marga dan Cipta Karya Aceh

Feasibility Study work and Environmental Analysis for Improved Roads Activity Cukul-Cisewu Rancabuaya Dan Peningkatan Ruas Jalan Ciwedey-Rancabali | Dinas Bina Marga Jabar

Renovasi Hangar FTC | PTDI

Detail Survey Pipeline Route untuk Pengalihan (Jawa Sumatera) | PT PGN (Persero) Tbk.

Ramba Jetty | COPI (Blanket Project)

Matak Runway Overlay | COPI (Blanket Project)

Onshore Pigging Soil Investigation | COPI (Blanket Project)

Dayung Landslide Mitigation | COPI (Blanket Project)

Water Disposal Project | COPI (Blanket Project)

Core Drill Test | COPI (Blanket Project)

Onshore Pigging Topography | COPI (Blanket Project)

Ramba Mud Chemical Test | COPI (Blanket Project)

Rawa Power Generator Soil Investigation | COPI (Blanket Project)

HDD Dayung | COPI (Blanket Project)

ROW Pipeline Risk Assessment | COPI (Extension Blanket Project)

Dayung KM 46 Landslide Mitigation | COPI (Extension Blanket Project)

Dayung KM 46 Landslide Monitoring | COPI (Extension Blanket Project)

Bridges Assessment at on 21 bridges at Onshore Area | COPI (Blanket Project)

Supervision Enhancement Crude Rubber Road at Pinang Village Sebatang East

Supervision Enhancement Axle Road at Sri Gemilang Village

Planning Construction of Roads and Bridges Seberang Teluk - Siberobah - Sangau

Planning Construction of Roads and Bridges Sampurago Village- Lubuk Ambacang + Duct 1000m

Experience



2012

DED Additional of Highway lanes Pasteur-Kopo (Under Pondok Survey)
DED Kandis Road - Sungai Mandau District
Supervision Road Construction - Balai Kayang Sutomo
Planning Construction of Roads Sp. Tiga - Sinambek - City Gate Jake - Sei. Ullo Hilir
Planning Construction of Roads Pl. Kumpai - Pasar Usang Baserah

2013

Belida WHPB Rig Assessment | COPI (Extension Blanket Project)
Belida DPPA Rig Assessment | COPI (Extension Blanket Project)
Matak Jetty Integrity | COPI (Extension Blanket Project)
Rawa Sumpal Telco Soil investigation | COPI (Extension Blanket Project)
Tower Inspection Guideline | COPI (Extension Blanket Project)
Puyuh Bridge Design Assessment | COPI (Extension Blanket Project)
Grissik Metering Lifting Aids Study | COPI (Extension Blanket Project)
Java Sea Pipeline Patrol | PT PGN (Persero) Tbk.
Feasibility Study Fishery Port | Kabupaten Batubara
UKL - UPL Development of Performance Test Facility at Bojonegara Plant, Serang-Banten | PT Perusahaan Gas Negara Leko & Kapas Bridges Design | COPI (Extension Blanket Project)
Installation Engineering Study for Subsea Manifold Structure, 26" Production Flowline and 12" Flexible Flowline as Part of Terang Serasun Batur Development Project
Supervision Road Maintenance Simpang Meredan - Bridge
Supervision Technical Development Leoning Reinforced Concrete Jl. Pembangunan Desa Bandar Sungai
Technical Planning of Roads and Bridges Sei. Bawang I, Sei. Bawang II, and Sei. Bawang III
Planning Construction of Roads at Sei. Sorik Village and Tanjung Putus Village

Experience



2014

- Provision of Engineering Blanket Services | Star Energy Geothermal Wayang Windu, Ltd
- Provision of Survey Blanket Services, | Star Energy Geothermal Wayang Windu, Ltd
- Jasa Engineering Services Civil di Aset 5 | Pertamina EP
- Survey Investigation and Design Reclamation of Wilmar Backyard area, Teluk Bayur Port | PT. Pelindo 2
- Road Improvement planning Roads at Muaro Sentaji Dusun kayu Batu

2015

- Geotechnical survey Building Schools Darul Hikam | Bandung, West Java
- Design Jetty Pier Expansion | Palembang, Sumatera
- Onshore Soil Investigation | Gersik, East Java
- Provision of engineering design consultancy services, architectural and spatial as well as periodic supervisi the construction / renovation of office PT. Pertamina EP Asset 5 | North Tarakan
- Soil Invetigation services Provision Soil Investigation within 3D Seismic Area GL ACCOUNT : 420101-903 | Talisman Energy
- Preparation of Risk Assessment and Management Regional Plan | Rokan Hulu District
- Site resonse analysis on liquefiable sand deposit | Holtekam Bridge, Papua
- Site specific response spectra analysis including Liquefaction assessment | Blitung, Sulawesi Utara

Experience



2016

- Pekerjaan Penyelidikan Tanah dan Analisis Penurunan Tanah Reklamasi Pulau L|PT Pembangunan Jaya Ancol|Ancol, Jakarta Utara
- Pekerjaan Test Kepadatan Tanah DCP Kawasan Summarecon |PT Mahkota Permata Perdana | Gedebage,Bandung
- Pengujian/ Test Bahan untuk Tanah Timbunan di Kawasan Summarecon Bandung|PT Mahkota Permata Perdana |Gedebage Bandung
- Pekerjaan Design Perencanaan Struktur Buffetaria & Rest Area Kawasan Arabea, Aseana, Caribbea dan Indonesia Dufan Ocean|PT Pembangunan Jaya Ancol|Ancol, Jakarta Utara
- Provision of Soil Investigation Service on KKL2X New Coordinate|Talisman Energy |Jambi
- Soil Investigasi Belt Pelawi|PT Semen Baturaja (Persero) Tbk.|Baturaja
- Pekerjaan Design Struktur Gerbang & Entry Port Dufan Ocean|PT Pembangunan Jaya Ancol|Ancol, Jakarta Utara
- Provision of Pile Driving Analysis Test for KKL-2X Rig Foundation|Talisman Energy|Jambi
- Additional Soil Investigation - Ground Improvement Works for Proyek Pembuatan dan Taxiway Cargo Tahap I Airport Soekarno-Hatta, Jakarta|BUT Menard Geosystems | Airport Soekarno-Hatta, Jakarta
- DED Runway 3 Bandara Internasional Soekarno Hatta Airport | PT Angkasa Pura II (Persero) | Soekarno-Hatta, Jakarta
- Pekerjaan Design MEP Gerbang dan Entry Port Dufan Ocean | PT Pembangunan Jaya Ancol | Ancol, Jakarta Utara
- Pekerjaan DED Retaining Wall Sisi Barat Reklamasi Pulau K | PT Pembangunan Jaya Ancol | Ancol, Jakarta Utara
- Pekerjaan Desain Special Lighting | PT Pembangunan Jaya Ancol | Ancol, Jakarta Utara
- Design Engineering and Tender Support Engineering Service for East Jabung Well Location and Road Design Engineering and Tender Engineering Support Service | Talisman Energy
- Pekerjaan Perhitungan Quantity Surveyor Proyek Gerbang dan Entry Port | PT Pembangunan Jaya Ancol | Ancol, Jakarta Utara
- Design Master Plan MEP Dufan Ocean | PT Pembangunan Jaya Ancol| Ancol, Jakarta Utara
- RTT Pekerjaan Perbaikan Pelapisan Ulang (Overlay) dan Pengecatan Marka Jalan Sisi Darat dan Jalan Lini 1 D Area Terminal Kargo Bandara Soekarno-Hatta | PT Angkasa Pura II (Persero) | Airport Soekarno-Hatta, Jakarta
- Jasa Pengujian Struktur Bangunan Gedung Utama Lantai 5 RSAB Harapan Kita Tahun 2016 | RS Harapan Kita | RSAB Harapan Kita
- Review Perencanaan Terowongan WC1 dan WC2 Bandara Soekarno-Hatta | PT Angkasa Pura II (Persero) | Airport Soekarno-Hatta, Jakarta
- Pekerjaan EPC Pembangunan Bendung Cipasauran, Jaringan Pipa Transmisi Air Baku, dan Pembangunan WTP Cidanau serta Jaringan Pipa Air Bersih PT Krakatau Steel Industri | PT Adhi Karya (Persero) Tbk. | Bendung Cipasauran dan WTP Cidanau
- Evaluasi dan Re-Engineering Penurunan Tanah dan Pergeseran Pondasi Stacker-Reclaimer Harbour Stockyard Blast Furnace Complex PT Krakatau Steel (Persero) Tbk. | PT Krakatau Steel (Persero) Tbk. | Cilegon, Banten
- Jasa Konsultasi Perencanaan RTT Bandar Udara Pusako Anak Nagari | Dishubkominfo Kabupaten Pasaman Barat | Bandar Udara Pusako Anak Nagari
- DED Overlay Runway Bandar Udara Husein Sastranegara | PT Angkasa Pura II (Persero) | Bandar Udara Husein Sastranegara, Bandung
- Additional Soil Investigation - Ground Improvement Works for Proyek Pembuatan dan Taxiway Cargo Tahap II | BUT Menard Geosystems | Airport Soekarno-Hatta, Jakarta
- Waller Beam Capacity Check to Ground Anchor Load Bellevue Place Residential Tower di MT Haryono, Jakarta PT Freyssinet Total Technology
- Jasa Investigasi Dinding Penahan Tanah Cooling Tower Unit 3 PLTP Gunung Salak | PT Indonesia Power Unit Pembangkitan dan Jasa Pembangkitan Kamojang | PLTP Gunung Salak
- Manpower Supply |Mining One Consultants | Sumatera Selatan
- Survey Bathymetri dan Topografi Area Utara Hotel Putri Duyung | PT Pembangunan Jaya Ancol | Ancol, Jakarta Utara
- DED Jalan Akses Airside di Bandara Kualanamu | PT Angkasa Pura II (Persero) | Bandara Kualanamu, Medan
- Geotechnical Investigation at Kawasan Industri Maspion Gresik Indonesia (Amity Energy PTE LTD) | PT Atria Swascipta Rekayasa | Kawasan Industri Maspion, Gresik

Experience



2017

- Jasa Konsultan Project Management & Control untuk Pekerjaan Konstruksi Perkuatan Tanah Harbour Stockyard PT Krakatau Steel (Persero) Tbk. | PT Krakatau Steel (Persero) Tbk. | Harbour Stockyard
- Pekerjaan Pelaksanaan Sondir 5 Titik di Cimahi | PT Gistex | Jalan Jati, Cimahi
- Provision of Soil Investigation at Cisomang Bridge | PT LAPI ITB | Jembatan Cisomang
- Soil Investigation - Tender Underground Cable 500 kV (Juanda) | PT Wijaya Karya (Persero) Tbk. Departemen Power Plant dan Energi | Bandar Udara Juanda
- Assessment Building on Area COP | PT Tereos FKS Indonesia | Cilegon
- Provision of Blanket Contract Engineering Services & PDA Test | Talisman Energy | East Jabung
- Survey Detail Jalur Pipa Jalur Purwakarta - Subang | PT. Solusi Energy Nusantara | Purwakarta - Subang
- Pekerjaan Soil Investigation Pengembangan Jaringan Daerah Dumai | PT. Solusi Energy Nusantara | Dumai
- Jasa Konsultansi Rencana Teknik Terinci (RTT) Pekerjaan Beautifikasi dan Perluasan Terminal A di Bandar Udara Adisutjipto - Yogyakarta | PT Angkasa Pura I (Persero) | Bandar Udara Adisutjipto, Yogyakarta
- Jasa Konsultansi Rancangan Teknik Terinci (RTT) Konstruksi Runway, Taxiway, dan Apron berikut Fasilitas Penunjangnya di Proyek New Yogyakarta Internasional Airport (NYIA) | PT Angkasa Pura I (Persero) | Yogyakarta
- DED Isolated Area Bandara Internasional Soekarno Hatta | PT Angkasa Pura II (Persero) | Airport Soekarno-Hatta, Jakarta
- DED Overlay Apron B-C Bandara Husein Sastranegara | PT Angkasa Pura II (Persero) | Bandar Udara Husein Sastranegara, Bandung
- Penyelidikan Tanah Indoor Coaster Dufan | Taman Impian Jaya Ancol | Ancol, Jakarta Utara
- Provision of Geotechnical, Topography Survey, and Engineering Design Services | Talisman Sakakemang B.V. | Jambi
- Provision of Geotechnical Survey of Bangkanai Area | Ophir Indonesia (Bangkanai) Limited | Bangkanai, Kalimantan Tengah
- DED Overlay Runway Bandara PT Angkasa Pura II (Persero) | PT Angkasa Pura II (Persero) | Bandara PT Angkasa Pura II
- DED Overlay Runway Bandara Sultan Iskandar Muda Aceh | PT Angkasa Pura II KC Sultan Iskandar Muda | Bandara Sultan Iskandar Muda, Aceh
- DED Perbaikan Permukaan Runway 06-24 di Bandara Halim Perdanakusuma | PT Angkasa Pura II (Persero) | Bandara Halim Perdanakusuma, Jakarta
- Pekerjaan Sampling Tanah Urugan Harbour Stock Yard PT Krakatau Steel (Persero) Tbk. | PT Sankyu Indonesia International | Harbour Stock Yard PT Krakatau Steel (Persero) Tbk.
- Jasa Pengujian Georadar Area Turbin Unit 3 PLTP Gunung Salak | PT Indonesia Power Unit Pembangkitan dan Jasa Pembangkitan Kamojang | PLTP Gunung Salak
- Pekerjaan Soil Investigation Work of Industrial Complex PT MNA Serang | PT Multimas Nabati Asahan | Cilegon
- Soil Laboratory Test PT Purna Baja Harsco | PT Purna Baja Harsco | Cilegon
- Additional Soil Investigation for Ground Improvement Works - Pembangunan Area Oprit Jembatan untuk J Jalan Tol Pemalang-Batang | KSO Reka - Menard | alan Tol Pemalang Batang
- Desain Struktur Bangunan Indoor Coaster | Taman Impian Jaya Ancol | Ancol, Jakarta Utara
- Review DED Perencanaan Sisi Udara dan Perencanaan Overlay Runway Bandara Supadio Pontianak | PT Angkasa Pura II (Persero) | Bandara Supadio, Pontianak
- Investigasi Geoteknik Pulau Laut Propinsi Kalimantan Selatan PT Pamapersada Nusantara (Distrik JIEP) | PT Pamapersada Nusantara | Pulau Laut, Kalimantan Selatan

Experience



2018

- Pekerjaan Sampling Tanah Urugan Harbour Stock Yard PT Krakatau Steel (Persero) Tbk. Tahap 2 | PT Sankyu Indonesia International | Harbour Stock Yard PT Krakatau Steel (Persero) Tbk.
- Assessment Gedung CWM dan Gedung Silo | PT Tereos FKS Indonesia | Cilegon
- Jasa Konsultan RTT Rapid Exit Taxiway berikut Fasilitas Penunjangnya di Bandara I Gusti Ngurah Rai Bali | PT Angkasa Pura I (Persero) | Bandara I Gusti Ngurah Rai Bali
- Cone Penetration Test Work at Yogyakarta International Airport | BUT Menard Geosystems | Yogyakarta International Airport
- Pekerjaan Jasa Konsultan RTT Overlay Runway, Taxiway, dan Perencanaan Konstruksi Perbaikannya di Bandara Adi Sumarmo - Solo | PT Angkasa Pura I (Persero) | Bandara Adi Sumarmo, Solo
- DED Pembangunan Taxiway dan Perluasan Apron Bandara Blimbingsari Banyuwangi | PT Angkasa Pura II (Persero) | Bandara Blimbingsari, Banyuwangi
- Survey Topografi dan Soil Investigation Bandara Blimbingsari Banyuwangi | PT Angkasa Pura II (Persero) | Bandara Blimbingsari, Banyuwangi
- DED Overlay Runway Bandara Blimbingsari Banyuwangi | PT Angkasa Pura II (Persero) | Bandara Blimbingsari, Banyuwangi
- Proyek Design & Build Apron, Taxiway & Fasilitas Airside Bandara Internasional Lombok - Praya | PT Wijaya Karya (Persero) Tbk. Departemen Sipil Umum 3 | Bandara Internasional Lombok
- Jasa Konsultan Rancangan Teknik Terinci (RTT) Perluasan Terminal Bandara internasional Lombok | PT Angkasa Pura I (Persero) | Bandara Internasional Lombok
- Pekerjaan Detail Engineering (DED) Perbaikan Jalan Ancol Barat | PT Pembangunan Jaya Ancol | Ancol, Jakarta Utara
- Pre and Post Test at Ngurah Rai International Airport Bali | BUT Menard Geosystems | Bandara I Gusti Ngurah Rai Bali
- Pre and Post Test at Ngurah Rai International Airport Bali (Phase 2) | BUT Menard Geosystems | Bandara I Gusti Ngurah Rai Bali
- Soil Investigation at Runway 3 Soekarno- Hatta Airport | BUT Menard Geosystems | Airport Soekarno-Hatta, Jakarta
- DED Overlay Runway Bandara Internasional Minangkabau | PT Angkasa Pura II KC Bandara Internasional Minangkabau | Bandara Minangkabau, Padang
- Investigasi Geoteknik Buntok Provinsi Kalimantan Tengah | PT Pamapersada Nusantara | Buntok, Kalimantan Tengah
- Perencanaan Teknis Struktur Penyanggah Bangunan Cooling Tower | PT Tereos FKS Indonesia | Cilegon
- Desain Pondasi Wahana Star Shape Dufan, Ancol | Taman Impian Jaya Ancol | Ancol, Jakarta Utara
- Desain Pondasi Wahana Wave Swinger Dufan, Ancol | Taman Impian Jaya Ancol | Ancol, Jakarta Utara
- Jasa Konsultan DED Overlay Apron C-D, Taxiway B, Taxiway C dan Taxiway D | PT Angkasa Pura II (Persero) | Bandara Internasional Husein Sastranegara, Bandung
- Cone Penetration Test at Bandara I Gusti Ngurah Rai Bali | PT Geotekindo | Bandara I Gusti Ngurah Rai Bali
- Survey Topografi Bandara Jenderal Soedirman Purbalingga | PT Angkasa Pura II (Persero) | Bandara Jenderal Soedirman, Purbalingga
- Pekerjaan Analisa Hasil Pengukuran HWD dan Perhitungan Nilai PCN Permukaan Runway 06-24 Bandar Udara Halim Perdanakusuma | PT Hutama Karya (Persero) | Bandar Udara Halim Perdana Kusuma, Jakarta
- Soil Investigasi dan Survey Topografi Proyek Pelebaran dan Perpanjangan Runway Bandara Banyuwangi | PT Wijaya Karya (Persero) Tbk. Departemen Sipil Umum 1 Divisi Operasi 2 | Bandara Blimbingsari, Banyuwangi
- Perjanjian Pengadaan Jasa Konsultansi Basic Design Pengembangan Bandara Supadio Pontianak | PT Angkasa Pura II (Persero) | Bandara Supadio, Pontianak
- Survey Soil Investigation Bandara Jenderal Soedirman Purbalingga | PT Angkasa Pura II (Persero) | Bandara Jenderal Soedirman, Purbalingga
- Design and Build Proyek Pelebaran dan Perpanjangan Runway Bandara Banyuwangi | PT Angkasa Pura II (Persero) - JO WIKA | Bandara Blimbingsari, Banyuwangi
- Perencanaan Aksesibilitas Area Komersial Bandara Kualanamu | PT Angkasa Pura II (Persero) | Medan Sumatera Utara
- Rancangan Teknik Terinci Perencanaan Pekerjaan Perpanjangan Runway 08 (400 x 45 m) dan Sarana Penunjangnya di Bandara Adi Soemarmo - Solo | PT Angkasa Pura I (Persero) | Bandara Adi Sumarmo, Solo

Experience



2018

- Pekerjaan Penyelidikan Tanah Tambahan Proyek Apartemen Ocean Breeze Ancol | KSO Ancol Ocean Breeze | Ancol, Jakarta
- Perubahan Jasa Konsultansi Rancangan Teknik Terinci (RTT) Konstruksi Runway, Taxiway dan Apron berikut Fasilitas Penunjangnya di Proyek New Yogyakarta International Airport | PT Angkasa Pura I (Persero) | Kulon Progo, Yogyakarta
- Jasa Konsultansi Studi dan Perencanaan Peningkatan Daya Dukung Perkerasan Runway Eksisting dan Perpanjangan Runway serta Sarana Penunjangnya di Bandara Internasional Lombok | PT Angkasa Pura I (Persero) | Lombok
- Penyelidikan Tanah Ruas Tol Semarang-Demak dalam Mendukung Pekerjaan Manajemen Proyek Pembangunan Jalan Tol | PT Aria Jasa Reksatama (Under BPJT) | Jawa Tengah

2019

- Basic Design Fasilitas Haji di Bandara Embarkasi di PT Angkasa Pura II (Persero) | PT Angkasa Pura II (Persero) | Bandara PT Angkasa Pura II
- DED Overlay Runway Bandar Udara Depati Amir | PT Angkasa Pura II (Persero) | Bandar Udara Depati Amir, Pangkal Pinang
- DED Mine Haul Road & Coal Barge Loading Terminal Kalimantan Tengah | PT. Pamapersada Nusantara | Buntok, Kalimantan Tengah
- Jasa Konsultansi Rancangan Teknik Terinci (RTT) Perencanaan Perpanjangan Runway (150 m x 45 m), Peningkatan PCN dan Pembuatan Sarana Penunjangnya (Paved Shoulder, Exit Taxiway, RESA, Stop Way & Runway Light) di Bandara Sam Ratulangi - Manado | PT Angkasa Pura I (Persero) | Bandara Sam Ratulangi, Manado
- DED Perluasan Apron B-C & C-D Bandara Husein Sastranegara | PT Angkasa Pura II (Persero) | Bandara Husein Sastranegara, Bandung
- DED Pengembangan Bandara Notohadinegoro - Jember | PT Angkasa Pura II (Persero) | Jember, Jawa Timur
- Pekerjaan Pengadaan Konsultan QS Independen untuk Pekerjaan Pembangunan Tol Pemalang Batang | PT. Pemalang Batang Tol Road | Jawa Tengah



DOCUMENTATION



Documentation

Pembangunan Runway 3

Bandara International Soekarno-hatta



Documentation

Provision of Geotechnical, Topography Survey, and Engineering Design Services

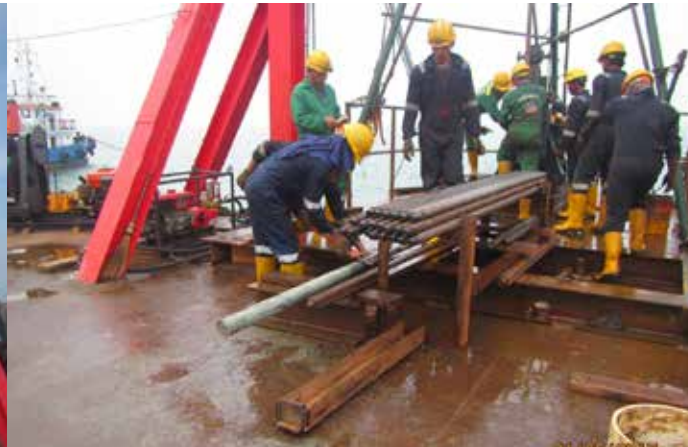
TALISMAN
ENERGY



Documentation Nearshore Soil Investigation For Single Point Mooring – Mor I Medan



PT. JAYA ANUGRAH LAUT



Documentation

Jasa Konsultansi Rancangan Teknik Terinci (RTT) Konstruksi Runway, Taxiway, dan Apron berikut Fasilitas Penunjangnya di Proyek New Yogyakarta Internasional Airport (NYIA)



Documentation

Jasa Konsultan Project Management & Control Untuk Pekerjaan Kosntruksi Perkuatan Tanah Harbour Stockyard PT Krakatau Steel. Tbk



Documentation

Additional Soil Investigation for Ground Improvement Works Pembangunan Area Oprit Jembatan untuk Jalan Tol Pemalang Batang



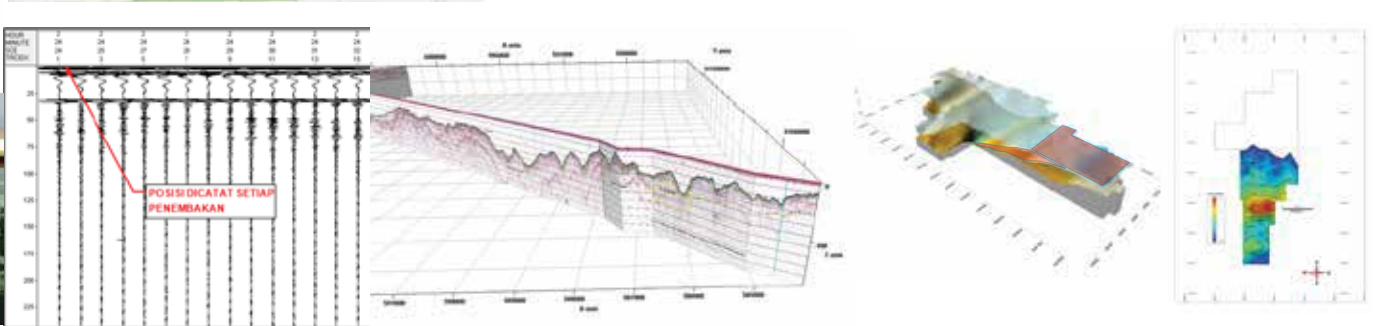
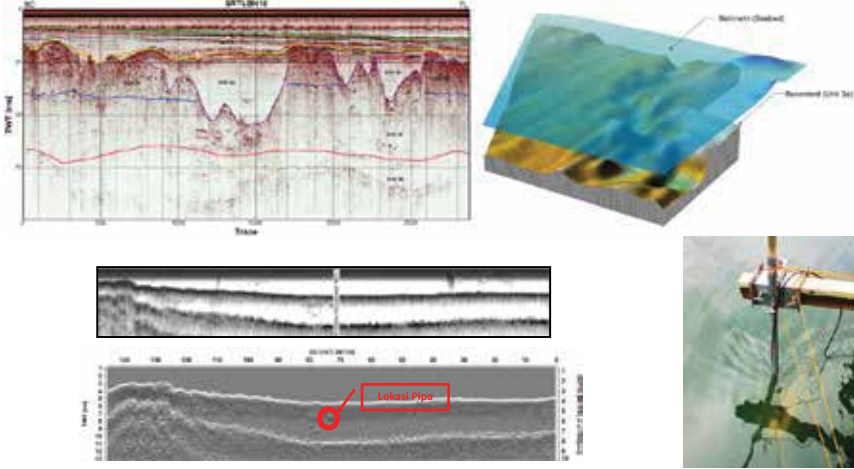
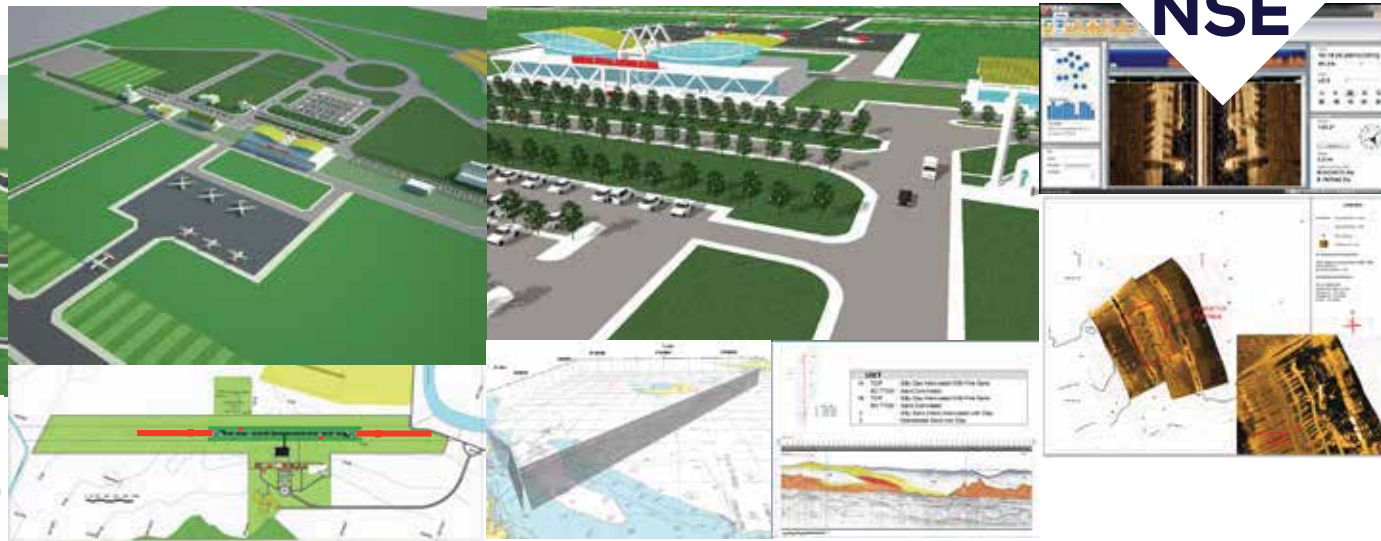
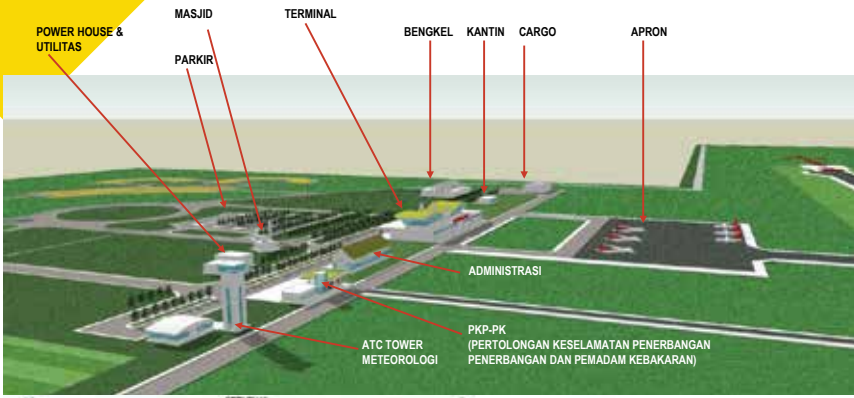
Documentation

Proyek Pengadaan Konsultan QS Independen Untuk Pekerjaan Pembangunan Tol Pemalang Batang



Documentation Pelebaran dan Perpanjangan Runway Bandara Banyuwangi





CLIENT





Head Office:
Jln. Batununggal Indah Raya No. 342
Telp : 022-87313433
Fax. : 022-87317506
Email: info@nse-corp.co.id
Visit: www.nse-corp.co.id

