



PT.DAIHO INDONESIA

Company Profile



OUR HISTORY

2012

- START Operation

2014

- Additional 12 unit of INJ M/C Total = 26 units
- Start Operation 2nd Process Silk Screen Printing
- Start Operation Automotive Parts (DENSO)

2016

- Build up Mezzanine FG Warehouse area and additional Injection Machine – Total 31 units

2018

- Additional Injection machines - 42 units as of Oct '18
- ISO VERSION UP certification (TUV Sud)

2020

- Total = 14 units of INJ M/C & Build up MLD Factory
- June Acquire ISO 9001:2008 & 14001:2004 (BVQi)

2013

- Start Operation of MLD Factory.
- Start Production of Automotive parts (SWS)

2015

- Build up Mezzanine 2 FG warehouse area and additional Injection machines - Total of 37 units.

2017

- Re-Certification Audit ISO Version-UP (May'19)

2019



Jakarta Factory

【概要】

操業開始:2012年4月

※大宝グループ最新の工場

従業員数:352名(正規77名 / 非正規264名 / 外国人11名) 男性 11名 女性 141名

【工場】

土地:44,000m² / 工場床面積:26,400m²

【主要取引先】

EPSONグループ / DENSOグループ / 住友電装グループ

【主な特徴】

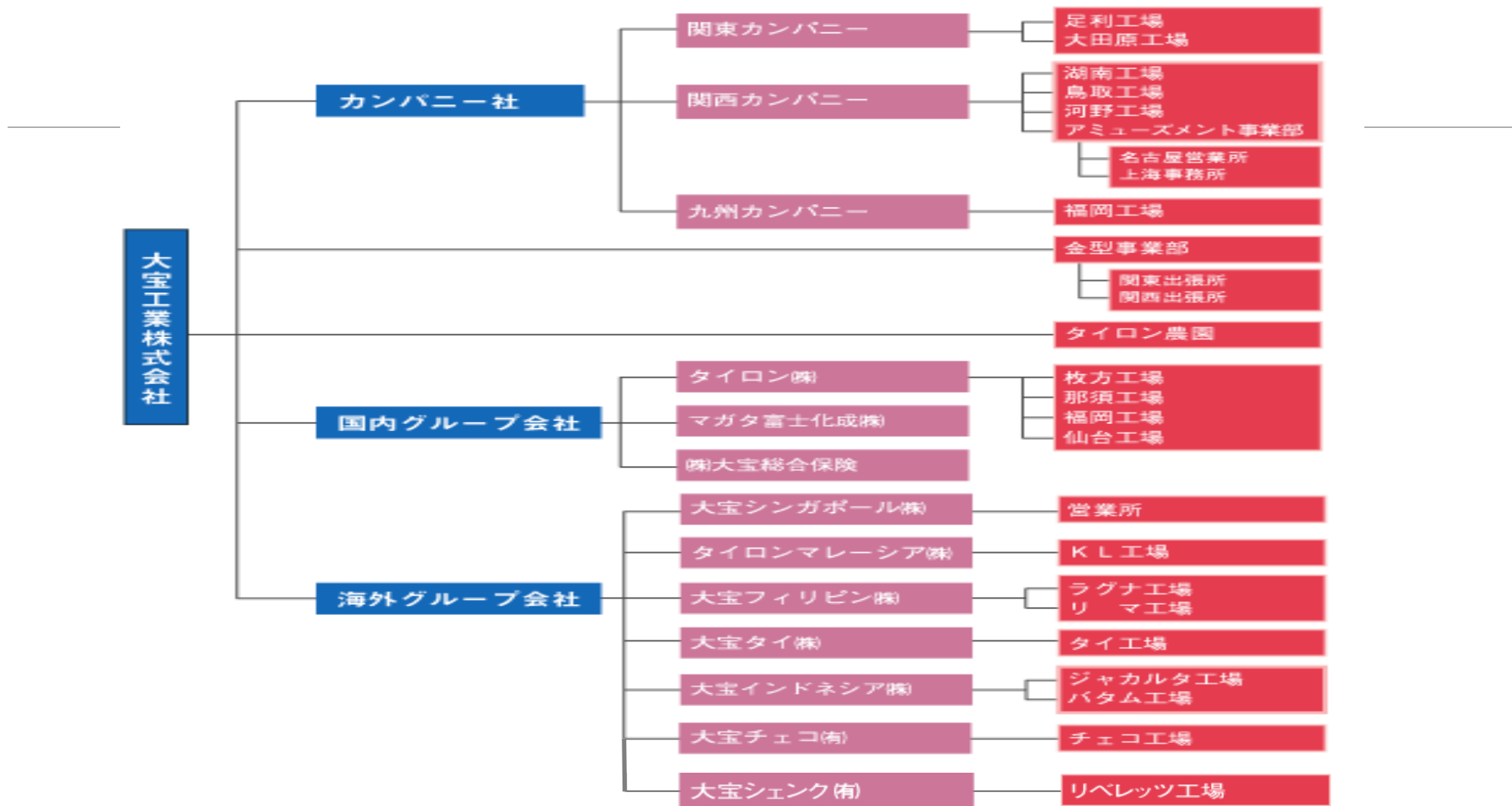
最新鋭の設備で生産性アップ(サイクルタイム短縮、難易度の高い製品)

金型工場を構え、2015年3月～本格的に金型製作を開始

金型設計製作～成形～2次加工まで一貫した物づくりを実現



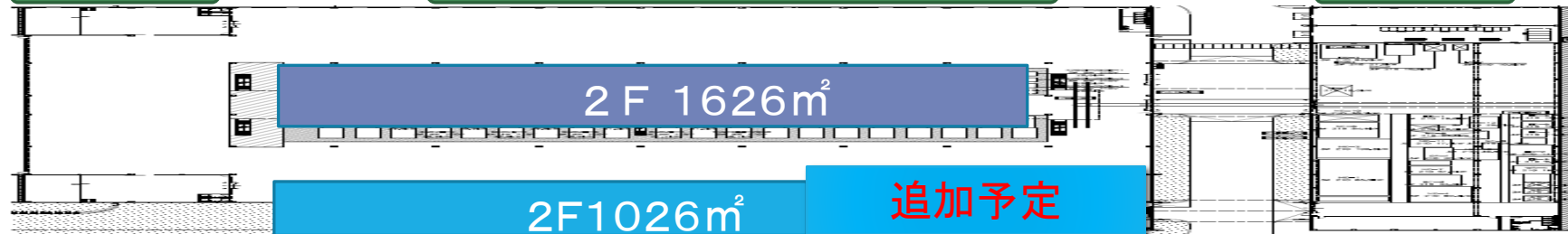
Daiho Group Company Profile



成形工場

1-1工場全体の改革の流れ

金型工場



機械増設 2012年14台⇒2018年1月39台

金型工場 2015年7月よりスタート



2016年2F倉庫1626m² 増設(3日在庫対応)

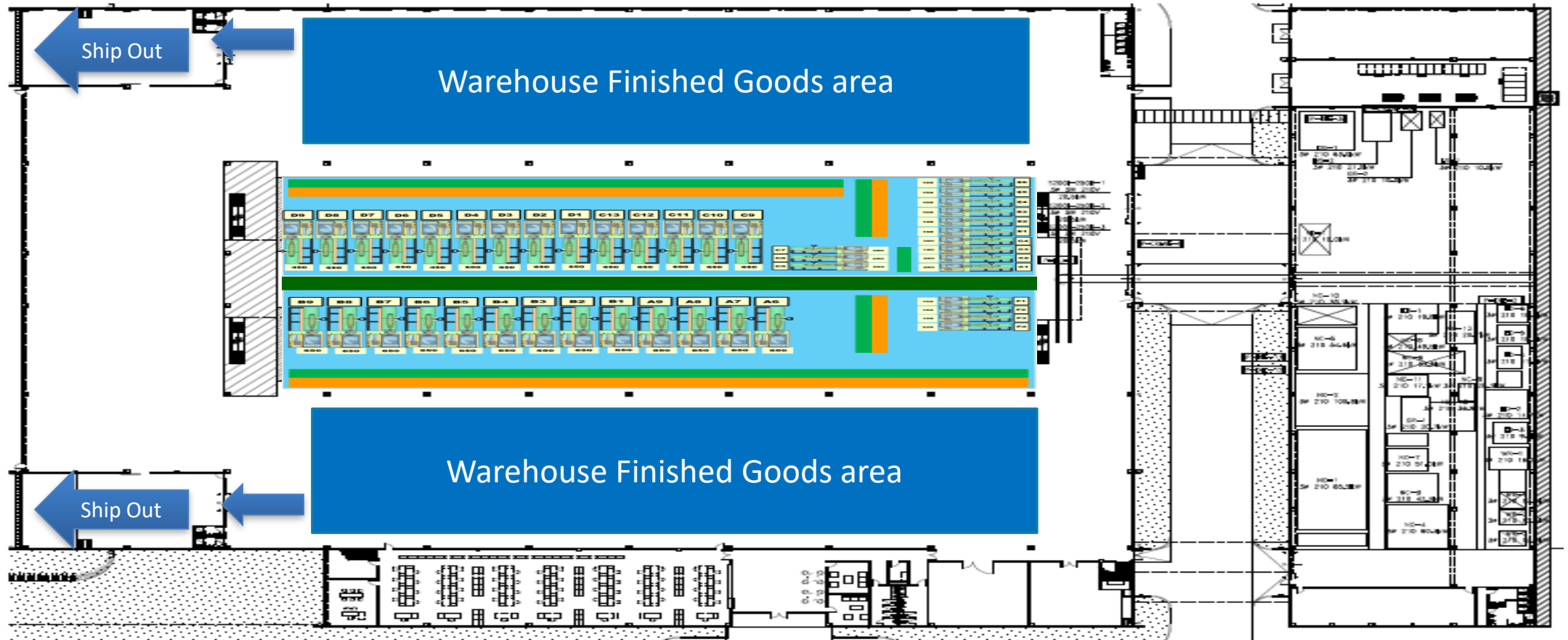
2017年2F倉庫1026m²増設(少lot対応)



Factory layout

成形工場

ユーティリティ



- ・先入れ、先出しを追求したレイアウト
- ・在庫の見える化
- ・成形機間の幅は最小限(コスト追求)

金型工場

DAIHO JAKARTA PRODUCTS - ELECTRONICS PARTS

EPSON

WORK FORCE PRINTER

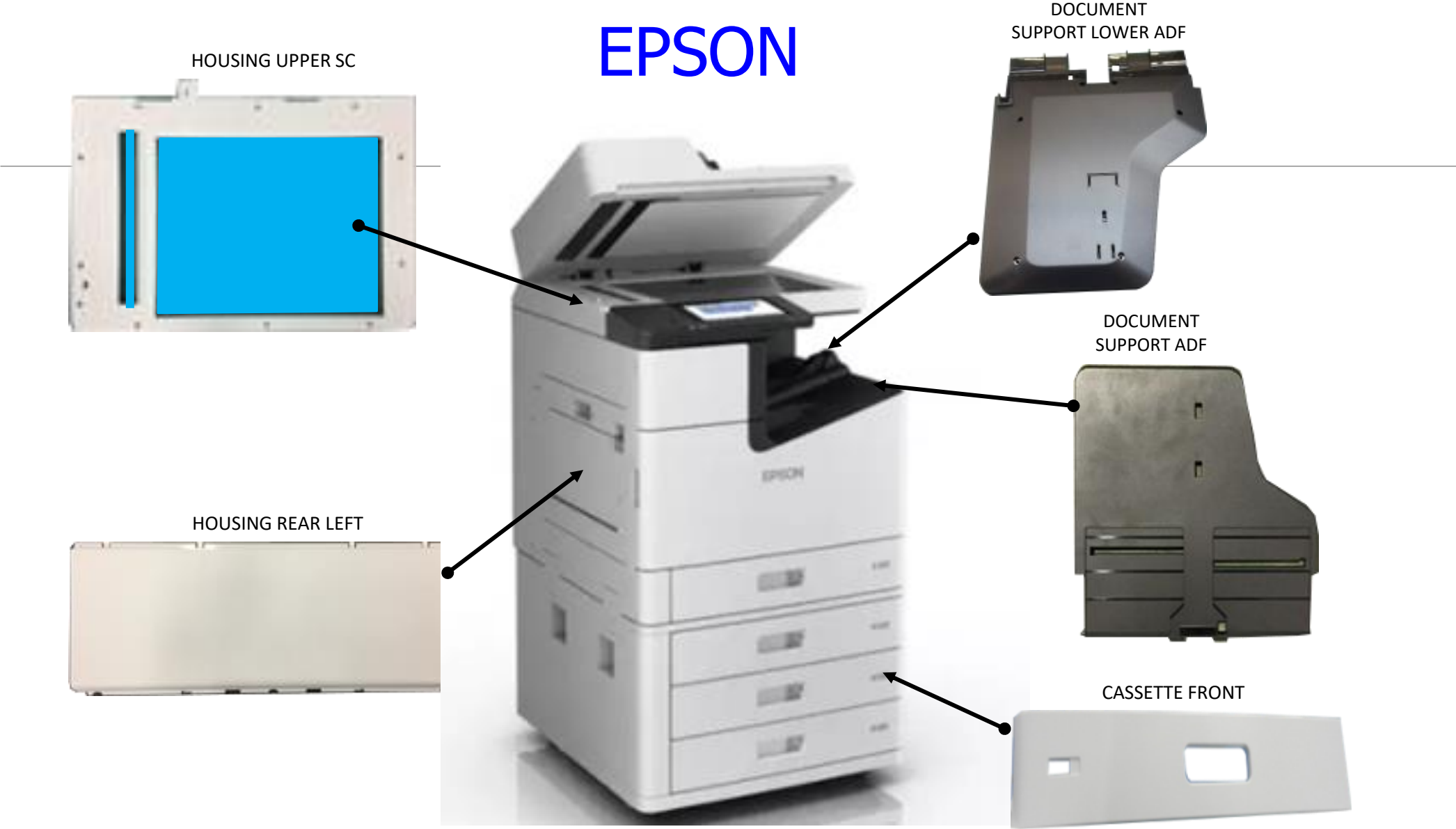


DAIHO JAKARTA PRODUCTS - ELECTRONICS PARTS

EPSON



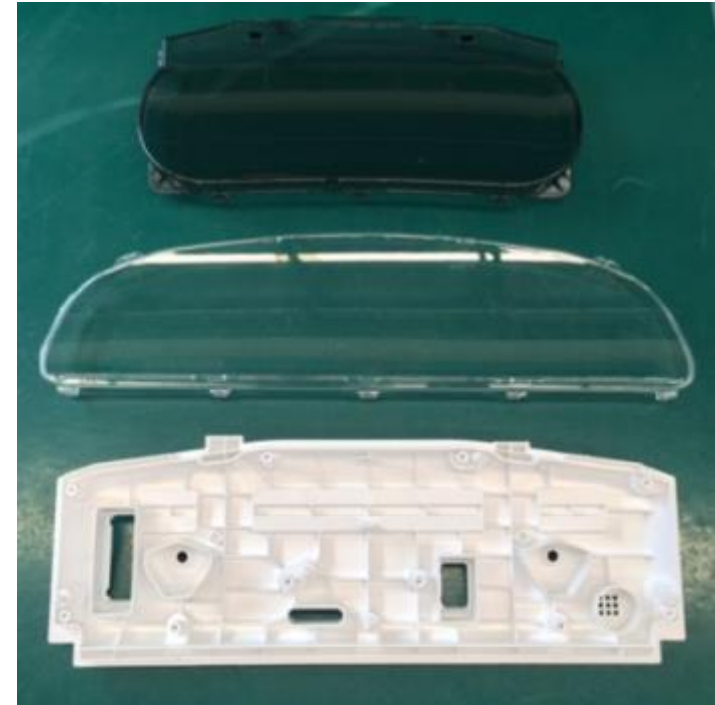
EPSON



EPSON



DENSO



DENSO



SIWS/SWS



Factory Equipment Summary - Machining

Injection machining

Mold Pressure	TYPE OF MACHINE	Tie Bar Distance	Platen Size	Min. Mold Thickness	Max. Mold Thickness	Daylight Max.	Qty	Special Equipment	MANUFACTURER
								Special Equipment	MANUFACTURER
ton	MODEL	(mm)	(mm)	mm	mm	mm			
100	α -S100i A	460 × 410	660 × 610	200	500	800	2	–	FANUC
150	α -S150i A	560 × 510	800 × 750	200	500	940	8	DGI	FANUC
220	α -S220i A	650 × 650	900 × 900	250	650	1200	1	–	FANUC
250	S-2000i250B	710 × 635	1030 × 960	300	650	1250	2	DGI	FANUC
250	α -S250i A	710 × 635	1030 × 960	300	650	1250	2	–	FANUC
300	S-2000i300B	810 × 710	1130 × 1030	300	650	1250	1	–	FANUC
300	α -S300i A	810 × 710	1130 × 1030	300	650	1250	1	–	FANUC
450	450ME II -50S	810 × 810	1190 × 1190	350	750	1550	9	DGI	MITSUBISHI
650	650ME II -100S	960 × 960	1400 × 1400	400	1000	2000	12	DGI	MITSUBISHI
650	650ME III -100S	960 × 960	1400 × 1400	400	1000	2000	1	–	MITSUBISHI
850	850ME II -160H	1070 × 1070	1590 × 1590	500	1100	2300	3	DGI	MITSUBISHI
TOTAL							42		

Factory Equipment Summary - Machining

Other Equipment

TYPE	Name	Qty	MANUFACTURER
BPU-03/10101021	Daiho Gas Injection Machine	9	Fesco
ACA-100Z-3	Auto Color for Floor type	2	KAWATA
JCW2 – i-054-APH-41J	Auto Color for Floor type	7	MATSUI
Crysta Apex-S 9106	CMM Measurement Machine	1	MITUTOYO
MJU ACRYTEC-C4	CMM Measurement Machine	1	CAIRNHILL
MF-A3017D	Measuring Microscope	1	MITUTOYO
ZTS – 500N	Digital Force Gauge	1	IMADA
Total		22	

Factory Equipment Summary - Machining

Mold Machinery and Equipment

TYPE	Name	Qty	MANUFACTURER
FNC128	CNC MILLING MACHINE	1	MAKINO
GF6	CNC MILLING MACHINE	1	MAKINO
BN2-85	CNC MILLING MACHINE	1	MAKINO
U86	WIRE CUT MACHINE	1	MAKINO
PSG126DX	GRINDING MACHINE	1	OKAMOTO
AQ55L	EDM MACNINE	1	SODICK
PSG126DX	GRINDING MACHINE	1	OKAMOTO
P-240F	CUTTING MACHINE	1	TSUNE SEIKI
NCC-300	BAND SAW MACHINE	1	NIHONCONNECTICUT SAW
YC-300BC1	WELDING MACHINE	1	MATSUSHITA
TL-200	LASER WELDING MACHINE	1	TECHNOCOAT
TOTAL		11	